



MINI ME USER MANUAL



TABLE OF CONTENTS

SAFETY PRECAUTIONS.	3-4
OVERVIEW	5
PRODUCT RANGE	6-7
FIRST USE.	8
PREPARING A BEVERAGE.	9
RECOMMENDATIONS FOR SAFE USE / ECONOMY MODE . . .	10
CLEANING	11
IF NO LIQUID COMES OUT...	12-13
DESCALING AT LEAST EVERY 3-4 MONTHS.	14-15
TROUBLESHOOTING	16-17

SAFETY PRECAUTIONS



When using electrical appliances, basic safety precautions shall always be followed, including the following:

1. Read all instructions and keep these safety instructions.
2. Connect the appliance to a mains socket with an earth connection only. Mains voltage must be the same as the details on the rating plate. The use of incorrect connection will negate the guarantee and may be hazardous.
3. This appliance is intended to be used in household only. It is not intended to be used in following applications, and the guarantee will not apply for:
 - staff kitchen areas in shops, offices and other working environments;
 - farm houses;
 - by clients in hotels, motels and other residential type environments;
 - bed and breakfast type environments;
4. In case of any inappropriate use or failure to comply with the instructions, the manufacturer accepts no responsibility and the guarantee will not apply. Use only NESCAFÉ DOLCE GUSTO capsules. Each capsule is designed to prepare a perfect cup, and cannot be reused. Do not remove hot capsules by hand. Use handles or knobs.
5. Always use the appliance on a flat, stable, heat resistant surface away from sources of heat or water splashes.
6. To protect against fire, electric shock and injury to persons do not immerse the power cord, plugs or the appliance in water or other liquid. Never touch the power cord with wet hands. Do not overfill the water tank.
7. In case of an emergency remove the plug from the power socket immediately.
8. Close supervision is necessary when the appliance is used near children. Keep the appliance / power cord / capsule holder out of reach of children. Children should be supervised to ensure that they do not play with the appliance. Never leave the appliance without surveillance while making a beverage.
9. This appliance is not intended for use by children or persons with reduced physical, sensory or mental capabilities, or lack of experience and knowledge, unless they have been given supervision or instruction concerning use of the appliance by a person responsible for their safety. Persons who have a limited or no understanding of the operation and use of this appliance must first read and fully understand the contents of the user manual, and where appropriate seek additional guidance on its operation and use from the person responsible for their safety.
10. Do not use the appliance without the drip tray and drip grid, except when a very tall mug is used. Do not use the appliance for hot water preparation.
11. For health reasons, always fill the water tank with fresh drinking water.
12. After use of the appliance always remove the capsule and clean the capsule holder. Empty and clean the drip tray and capsule bin daily. Users allergic to dairy products: Rinse the head according to the cleaning procedure.
13. Unplug from the mains socket when not in use.
14. Unplug from the mains socket before cleaning. Allow to cool before putting on or taking off parts, before cleaning the appliance. Never clean wet or immerse appliance in any fluid. Never clean the appliance with running water. Never use detergents to clean the appliance. Clean the appliance only using soft sponges/brushes. The water tank should be cleaned with a baby bottle brush.
15. Never turn the machine upside down.
16. If away for prolonged periods, on holiday, etc. the appliance must be emptied, cleaned and unplugged. Rinse before reuse. Operate the rinse cycle before re-using your appliance.
17. Do not turn off the appliance during the descaling process. Rinse the water tank and clean the appliance to avoid any residual descaling agent.
18. Any operation, cleaning and care other than normal use must be undertaken by after-sales service centres approved by NESCAFÉ DOLCE GUSTO Hotline.



SAFETY PRECAUTIONS


- Do not dismantle appliance and do not put anything into openings.
19. In case of intensive use without allowing sufficient cooling time, the appliance will stop functioning temporarily with the red indicator light blinking. This is to protect your appliance from overheating. Switch the appliance off for 20 minutes to let it cool down.
 20. Do not operate any appliance with a damaged cord or plug. If the supply cord is damaged, it must be replaced by the manufacturer, its service agent or similarly qualified persons in order to avoid a hazard. Do not operate any appliance that malfunctions or has been damaged in any manner. Unplug cord immediately. Return the damaged appliance to the nearest authorised service facility approved by NESCAFÉ DOLCE GUSTO Hotline.
 21. The use of accessory attachments not recommended by the appliance manufacturer may result in fire, electric shock or injury to persons.
 22. Do not let the cord hang over the edge of a table or counter, or touch hot surfaces or sharp edges. Do not allow the cord to dangle (risk of tripping up). Never touch the cord with wet hands.
 23. Do not place on or near a hot gas or electric burner, or in a heated oven.
 24. To disconnect, turn the power button OFF, then remove the plug from the wall socket. Do not unplug by pulling the cord.
 25. Always close the extraction head with the capsule holder. Do not pull out the capsule holder before the indicator stops blinking. The appliance will not work if the capsule holder is not inserted.
 26. Scalding may occur if the lever is opened during the brewing cycles. Do not pull up the lever before the lights on machine stop flashing.
 27. Do not put fingers under the outlet during beverage preparation.
 28. Do not touch the needle of the extraction head.
 29. Never carry the appliance by the extraction head.
 30. The capsule holder is equipped with permanent magnets. Avoid placing the capsule holder near appliances and objects that can be damaged by magnetism, e.g. credit cards, usb drives and other data devices, video tapes, television and computer monitors with picture tubes, mechanical clocks, hearing aids and loud speakers.
 31. Patients with pacemakers or defibrillators: Do not hold the capsule holder directly over the pacemaker or defibrillator.
 32. If the power socket does not match the plug on the appliance, have the plug replaced with a suitable type by after-sales service centres approved by NESCAFÉ DOLCE GUSTO Hotline.
 33. Packaging is made of recyclable materials. Contact your local council / authority for further information on recycling programs. Your appliance contains valuable materials which can be recovered or recycled.
 34. For additional guidance on how to use the appliance, refer to the user manual on www.dolce-gusto.com or call NESCAFÉ DOLCE GUSTO hotline number.
- WARNING: To reduce the risk of fire or electric shock, do not remove the cover. No user serviceable parts inside. Repair should be done by authorized service personnel only!**
- EUROPEAN MARKETS ONLY:**
35. Keep the appliance and its cord out of reach of children aged less than 8 years. Children shall not play with the appliance.
 36. This appliance can be used by children aged from 8 years and above and persons with reduced physical, sensory or mental capabilities or lack of experience and knowledge if they have been given supervision or instruction concerning use of the appliance in a safe way and if they understand the hazards involved.
Cleaning and user maintenance shall not be made by children unless they are older than 8 and supervised by an adult.
This appliance is labeled in accordance with European Directive 2002/96/EC concerning used electrical and electronic appliances equipment – WEEE). The directive determines the framework for the return and recycling of used appliances as applicable throughout the EU.
Please be aware that the appliance is still using electricity whilst in eco-mode (0.4 W/hour).





OVERVIEW

NESCAFÉ
Dolce Gusto



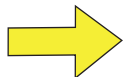
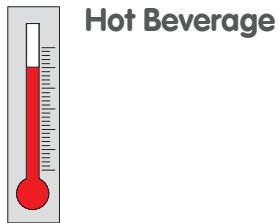
- | | | | |
|-------------------|-------------------|------------------|-------------|
| ① Water tank | ④ Stop | ⑦ Locking handle | ⑩ Drip grid |
| ② Selection lever | ⑤ Hot | ⑧ Capsule holder | ⑪ Drip tray |
| ③ Cold | ⑥ Volume selector | ⑨ Power button | |

 NO, SE, FI, DK, ES, IT, CH, UK, DE, AUS, ZA
 US
 230 V / 50 Hz / 1500 W
120 V / 60 Hz / max. 1500 W

P max. 15 bar
  0.8 l
  ~2.5 kg
  5-45 °C
41-113 °F
 
A = 16 cm
B = 30.5 cm
C = 24 cm



PRODUCT RANGE



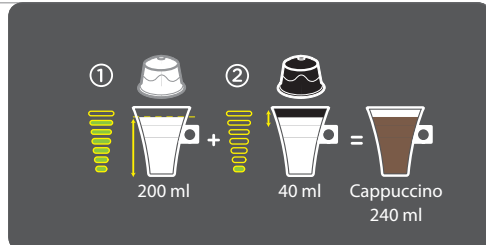
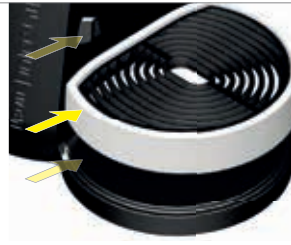
ESPRESSO



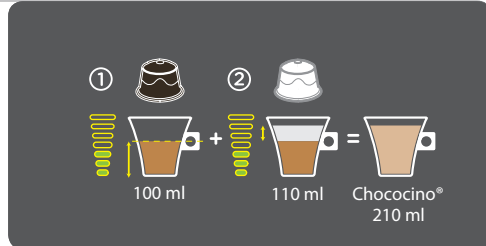
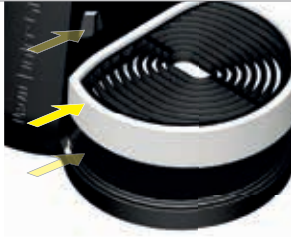
LUNGO



CAPPUCCINO



CHOCOCINO



PRODUCT RANGE

LATTE MACCHIATO

Diagram illustrating the preparation of Latte Macchiato. It shows a box of NESCAFÉ Dolce Gusto Latte Macchiato, two capsules (labeled 1 and 2), and a coffee machine dispensing coffee into a cup. The final result is a glass of Latte Macchiato (220 ml) composed of 170 ml of Latte (capsule 1) and 50 ml of Chai Tea (capsule 2).

CHAI TEA LATTE

Diagram illustrating the preparation of Chai Tea Latte. It shows a box of NESCAFÉ Dolce Gusto Chai Tea Latte, two capsules (labeled 1 and 2), and a coffee machine dispensing coffee into a cup. The final result is a glass of Chai Tea Latte (220 ml) composed of 120 ml of Latte (capsule 1) and 100 ml of Chai Tea (capsule 2).

Diagram illustrating the preparation of Cold Beverage. It shows a thermometer, a glass of cold beverage with ice, a NESCAFÉ Dolce Gusto Cappuccino Ice capsule, and a coffee machine dispensing coffee into a glass. The final result is a glass of Cold Beverage (240 ml) composed of 135 ml of Latte (capsule 1) and 105 ml of Cappuccino Ice (capsule 2).

CAPPUCCINO ICE

Diagram illustrating the preparation of Cappuccino Ice. It shows a box of NESCAFÉ Dolce Gusto Cappuccino Ice, two capsules (labeled 1 and 2), and a coffee machine dispensing coffee into a glass. The final result is a glass of Cappuccino Ice (240 ml) composed of 135 ml of Latte (capsule 1) and 105 ml of Cappuccino Ice (capsule 2).



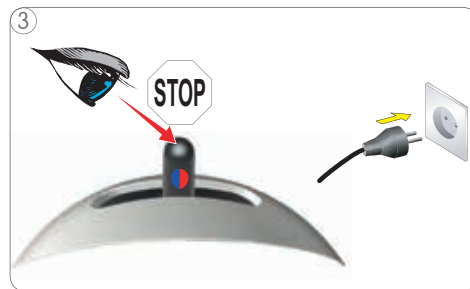
FIRST USE



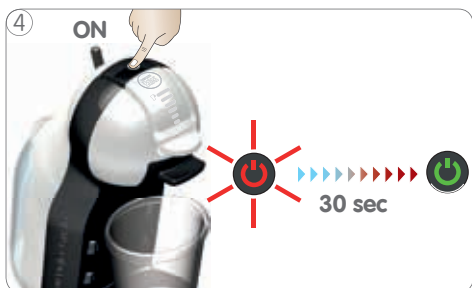
1 Rinse water tank at first. Fill water tank with fresh, drinking water. Place cap and insert water tank to machine.



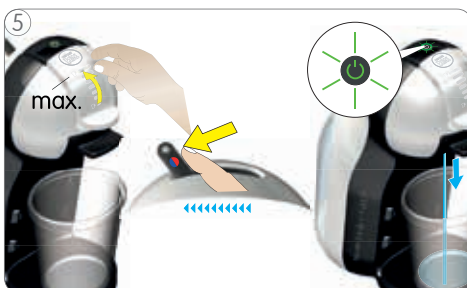
2 Open locking handle and insert empty capsule holder. Close locking handle. Place empty container under outlet.



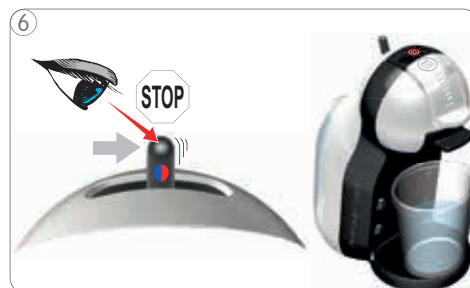
3 Make sure that the selection lever is in "STOP" position. Then plug the power plug into a mains power socket.



4 Switch machine on. Power button starts blinking red while machine is heating up for approx. 30 seconds. Afterwards power button lights steady green and machine is ready.



5 Set the bar display to the maximum level with the volume selector. Move lever to the left to start rinsing.



6 Wait until the lever comes back to the middle and extraction stops. Machine stops rinsing and power button blinks red for about 10 seconds.



7 Move lever to the right to start rinsing.

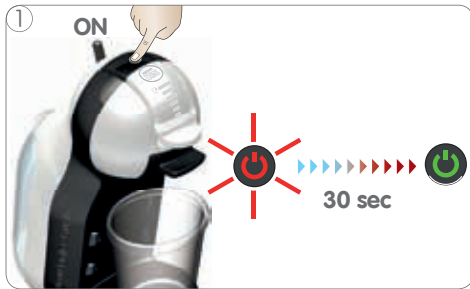


8 Wait until the lever comes back to the middle and extraction stops. Empty and clean the jug. Fill water tank with fresh, drinking water up to max. level.



9 Place drip grid on drip tray. Then insert drip tray at desired position of machine.

PREPARING A BEVERAGE



Switch machine on. Power button starts blinking red while machine is heating up for approx. 30 seconds. Afterwards power button lights steady green and machine is ready.



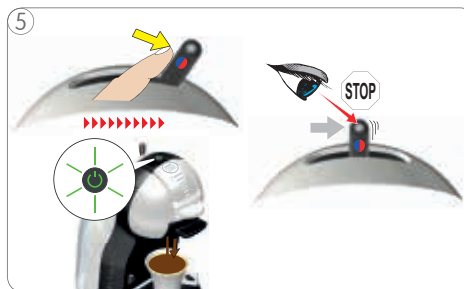
Adjust drip tray position according to the chosen beverage (see page 6-7). Place cup on drip tray.



Open locking handle and pull out capsule holder. Insert capsule in capsule holder and insert it back in machine. Close locking handle.



Set the beverage volume with the selector following the recommendation indicated on the capsule, or set it to your own taste.



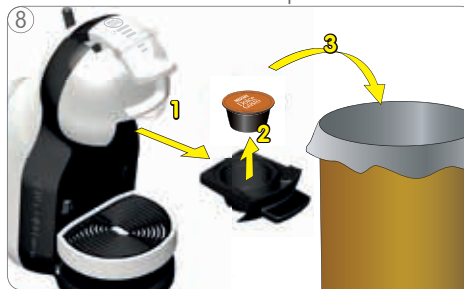
Move the lever to the right for hot beverages and to the left for cold beverages. Beverage preparation starts. Wait until the lever comes back to the middle and extraction stops. Extraction can be stopped manually by moving the lever back to the middle position.



After finishing preparation the power button blinks red for about 10 seconds. **During that time do not open locking handle!**



Take cup from drip tray. Open locking handle.



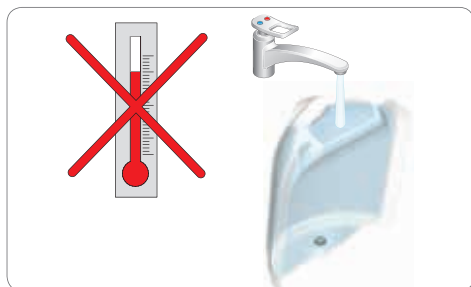
Pull out capsule holder and remove used capsule. Put used capsule in dustbin.



Rinse and dry capsule holder with water from both sides. Insert capsule holder to machine. Enjoy your beverage!



RECOMMENDATIONS FOR A SAFE USE



⚠ Never fill hot water into the water tank!



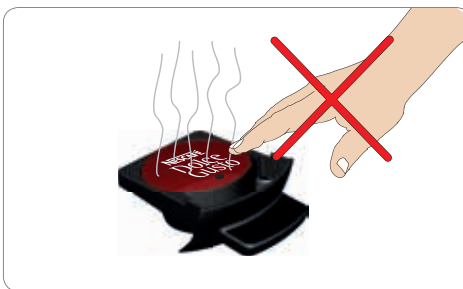
⚠ Never open the locking handle during beverage preparation!



⚠ After finishing preparation the power button blinks red for about 10 seconds. **During that time do not open locking handle!**



⚠ Never push selection lever while locking handle is opened!

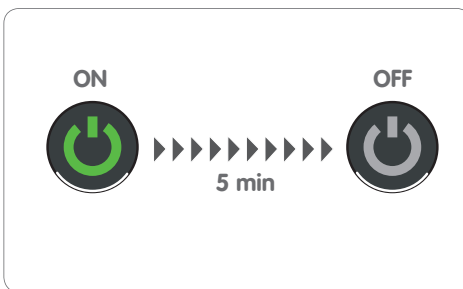


⚠ Do not touch used capsule after beverage preparation! Hot surface, risk of burns!



⚠ Never use a wet sponge but only cleaning towels to clean the head of the machine!

ECONOMY MODE



After 5 minutes of non-usage the machine automatically shuts down (Economy Mode).

CLEANING



1 Rinse drip tray with water and clean it with a brush.



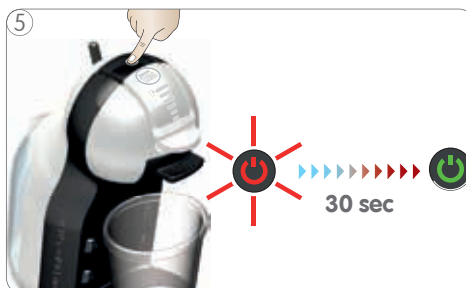
2 Rinse and dry capsule holder with water from both sides. You can also put it in a dishwasher.



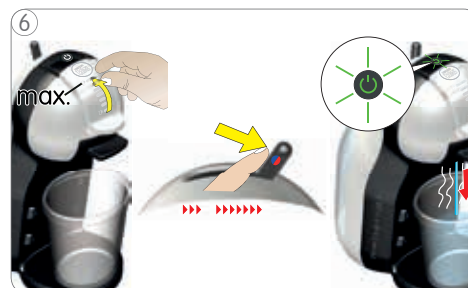
3 Rinse and clean water tank. Afterwards refill with fresh, drinking water and insert it to machine. The water tank is not dishwasher proof!



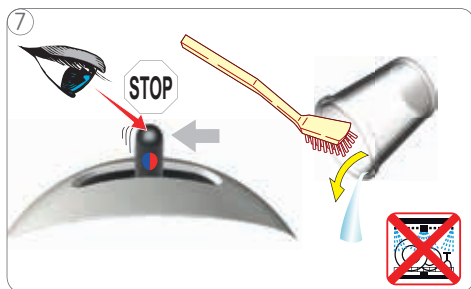
4 Open locking handle and insert empty capsule holder. Close locking handle and place empty container.



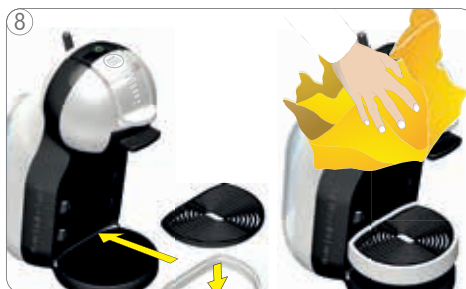
5 Switch machine on. Power button starts blinking red while machine is heating up for approx. 30 seconds. Afterwards power button lights steady green and machine is ready.



6 Set the bar display to the maximum level with the volume selector. Move lever to the right to start rinsing.



7 Wait until the lever comes back to the middle and extraction stops. Empty and clean the jug.



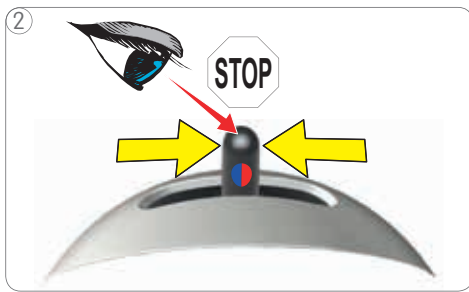
8 Place drip grid on drip tray. Then insert drip tray at desired position of machine. Clean machine with a soft damp cloth. Dry it afterwards with a soft dry cloth.



IF NO LIQUID COMES OUT...



1 No liquid comes out and the machine makes a loud noise.



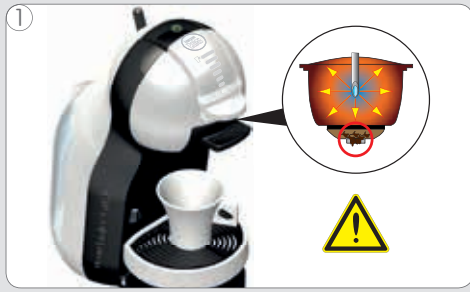
2 Turn selection lever to neutral position.



3 Check if there is water in the water tank: if not, refill and move lever again to hot/cold position to continue preparation; if yes proceed as follows:

Check if locking handle can be lifted easily: NO - see section (A) (below) / YES - see section (B) (next page)

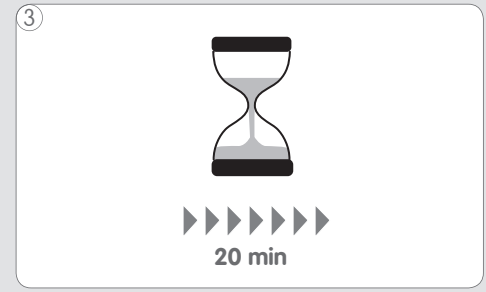
A



1 The capsule may be blocked and under pressure.



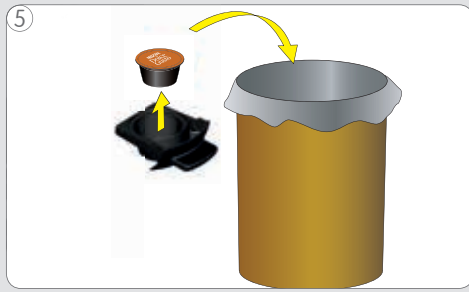
2 Do not use force to lift the locking handle.



3 Wait for 20 minutes to reduce the pressure.



4 Then lift the locking handle and remove the capsule holder.



5 Throw away the capsule.

IF NO LIQUID COMES OUT...



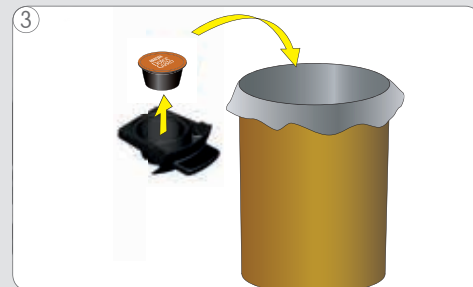
B



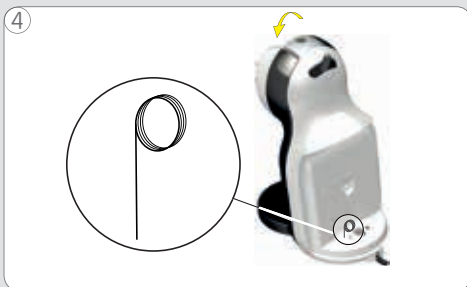
The injector may be blocked.



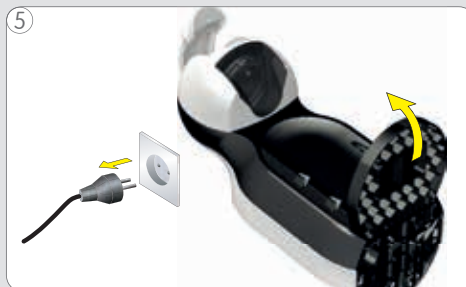
Lift the locking handle and remove the capsule holder.



Throw away the capsule.



Remove the water tank and take out the cleaning needle. Close the locking handle.



Unplug machine. For better access to injector tilt machine.



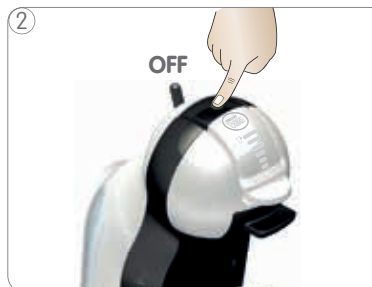
Unblock the injector with the cleaning needle.



DESCALING AT LEAST EVERY 3-4 MONTHS



If the beverage only comes out in droplets or if the beverage is cooler than usual, the machine has to be descaled.



Switch machine OFF.



www.dolce-gusto.com

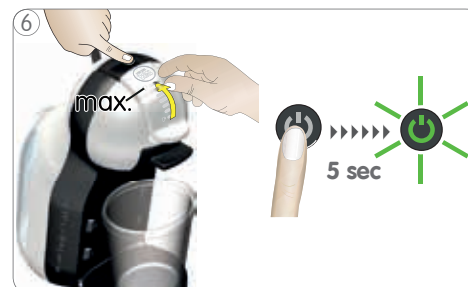
Call NESCAFÉ DOLCE GUSTO Hotline or go on the NESCAFÉ DOLCE GUSTO website. For Hotline numbers see Safety Precaution booklet.



Mix 0.8 litre fresh, drinking water with descaler sachet in a measuring cup. Pour descaling solution into water tank and insert water tank to machine.



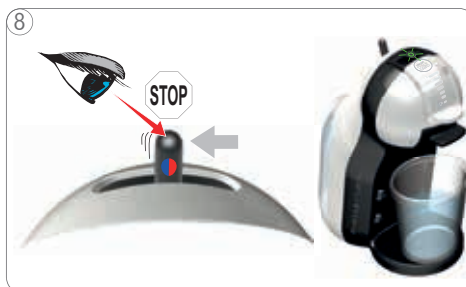
Open locking handle and insert empty capsule holder. Close locking handle and place empty container.



Set the bar display to the maximum level with the volume selector. Press and hold power button for at least 5 seconds. Power button starts blinking green and machine enters the descaling mode.



Move lever to the right. Machine descales in start-stop operation for approximately 2 minutes.

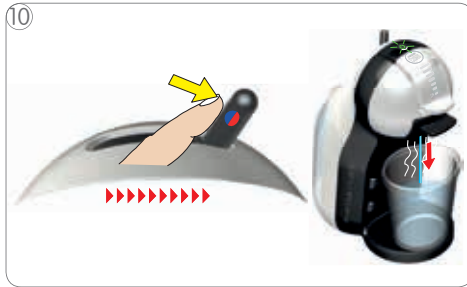


Lever comes back to the middle position. The power button blinks green during 2 minutes at the end of the descaling cycle.

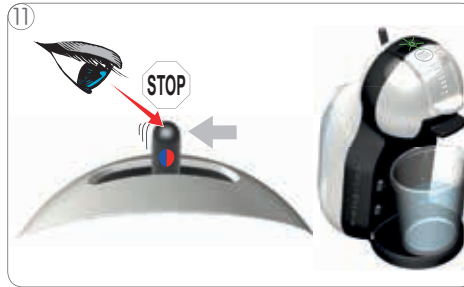


Empty and clean the jug. Rinse and clean water tank. Afterwards refill with fresh, drinking water and insert it to machine.

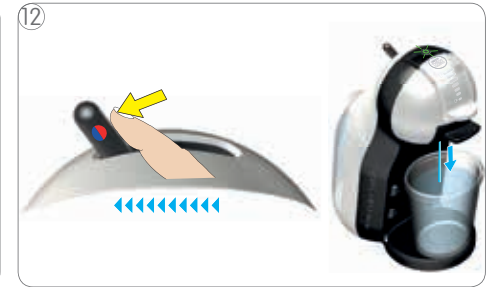
DESCALING AT LEAST EVERY 3-4 MONTHS



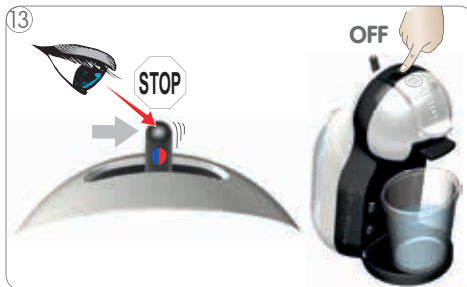
10 Move lever to the right to start rinsing. Wait until the lever comes back to the middle and extraction stops.



11 Lever comes back to the middle position.



12 Move lever to the left to start rinsing. Wait until the lever comes back to the middle and extraction stops.



13 Lever comes back to the middle position. At the end of rinsing cycle, the power button lights up red. Wait until machine switches back to normal operation. Then switch the machine off.



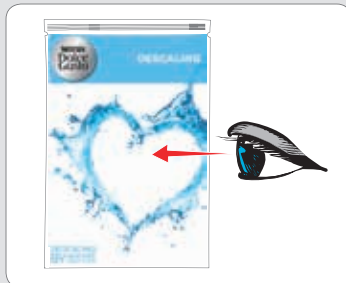
14 Empty and clean the jug. Rinse and clean water tank. Afterwards refill with fresh, drinking water and insert it to machine.



15 Place drip grid on drip tray. Then insert drip tray at desired position of machine. Clean machine with a soft damp cloth. Dry it afterwards with a soft dry cloth.



IMPORTANT HINTS



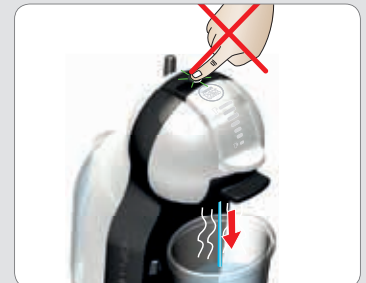
Follow instructions on descaling kit user manual.



Avoid contact of descaling liquid with any part of the machine.



Do not use vinegar for descaling.



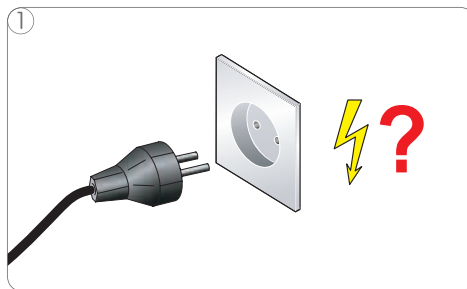
Do not push power button during descaling cycle.



TROUBLESHOOTING



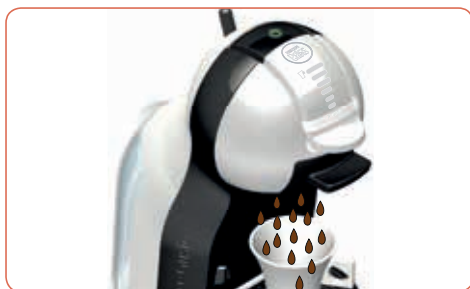
Machine cannot be switched on.



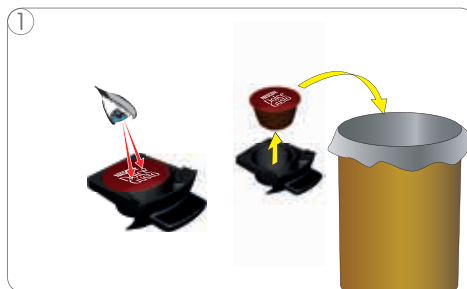
1 Check if the power plug is plugged correctly into a mains power socket. If yes check your electricity supply.



2 If machine still cannot be switched on call NESCAFÉ DOLCE GUSTO Hotline. For hotline numbers see Safety Precaution booklet.



Beverage is splashing out of coffee outlet.



1 Stop preparation, pull out capsule holder and check capsule. There should be only one hole in the capsule. Throw away capsule with more than one puncture.



2 Insert a new capsule in the capsule holder and insert it back in the machine.



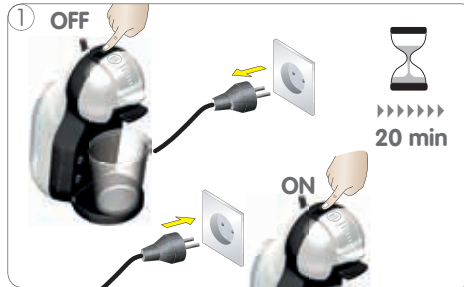
If the beverage only comes out in droplets or if the beverage is cooler than usual, the machine has to be descaled.



1 Call NESCAFÉ DOLCE GUSTO Hotline or go on the NESCAFÉ DOLCE GUSTO website. For hotline numbers see Safety Precaution booklet.



Power button flashes red fast.



① Switch machine off. Check if capsule is blocked (see page 12). Unplug power plug and wait 20 minutes. Afterwards plug power plug into mains power socket and switch machine on.



② If power button still flashes red call NESCAFÉ DOLCE GUSTO Hotline. Hotline numbers see safety precautions booklet.



HOTLINES

AL	0842 640 10	HK	2179 8888	MT	80074114
AR	0800-999-8100	HR	0800 600 604	MY	1800 88 3633
AT	0800 365 23 48	HU	06 40 214 200	NL	0800-3652348
AU	1800 466 975	IE	00800 6378 5385	NO	800 80 730
BE	0800 93217	IT	800365234	PE	80010210
BG	0 800 1 6666	JP	81-35651-6848	PL	0800 174 902
BR	0800 7762233		(machines)	PT	800 200 153
BS	0800 202 42		81-35651-6847	RO	0 800 8 637 853
CA	1 888 809 9267		(capsules)	RU	8-800-700-79-79
CH	0800 86 00 85	KO	080-234-0070	SE	020-29 93 00
CL	800 4000 22	KS	0842 640 10	SG	1 800 836 7009
CZ	800 135 135	KZ	8-800-080-2880	SK	0800 135 135
DE	0800 365 23 48	LU	8002 3183	SL	080 45 05
DK	35460100	LT	8 700 55 200	SR	0800 000 100
EE	6 177 441	LV	67508056	UK	0800 707 6066
ES	902 102 706	ME	020 269 902	UKR	0 800 50 30 10
FI	0800 0 6161	MEX	5267 3304	US	1-800-745-3391
FIL	898-0061		01800 365 2348	ZA	086 009 6116
FR	0 800 97 07 80		(Lada sin costo)		(toll free)
GR	800 11 68068	MK	0800 00 200		+27 11 514 6116



The guarantee does not cover appliances that do not work or do not work properly because they have not been maintained and/or descaled.